

## INPRO - F1 / Parent Stock (PS) Gilt

Genetic Breed	F1 = Pure LANDRACE x Pure LARGE WHITE
Genetic Source	INFARMCO Genetics
Age at mating	215 days With at least 3 observed heat cycles
Weight at mating	155 kg
Farrowing Index	2.3 per year
Litter size Born Alive (LSBA)	13 Piglets
Ave. Weight at birth	1.45 kg
Weaning age	28 days
Weaning weight	8.6 kg
Age at 90 kg	150-155 days
ADG	600 grams per day

*Note: Performance varies depending on Farm conditions*

### Attaining the best of Genetic Potential Performance

- 1 Right Genetics
- 2 Right Nutrition
- 3 Right Pig Husbandry Practices
- 4 Proper Facilities and Equipment
- 5 Proper Biosecurity Protocols and implementation
- 6 Proper space allocation and pig flow
- 7 Minimal to no disease challenge

COMPANY ADDRESS *Barangay Dalwangan,  
Malaybalay City, Bukidon*

TEL. NOS. *0919-0864946 (Smart)*

EMAIL *info@infarmco.com*



**INPRO SWINE GENETICS  
CORPORATION**





INFARMCO is the leading home-grown swine genetic company with the largest nucleus herd, serving the hog industry for the last 42 years in the Philippines. INFARMCO has incorporated GENOMICS into the selection of the nucleus herd.

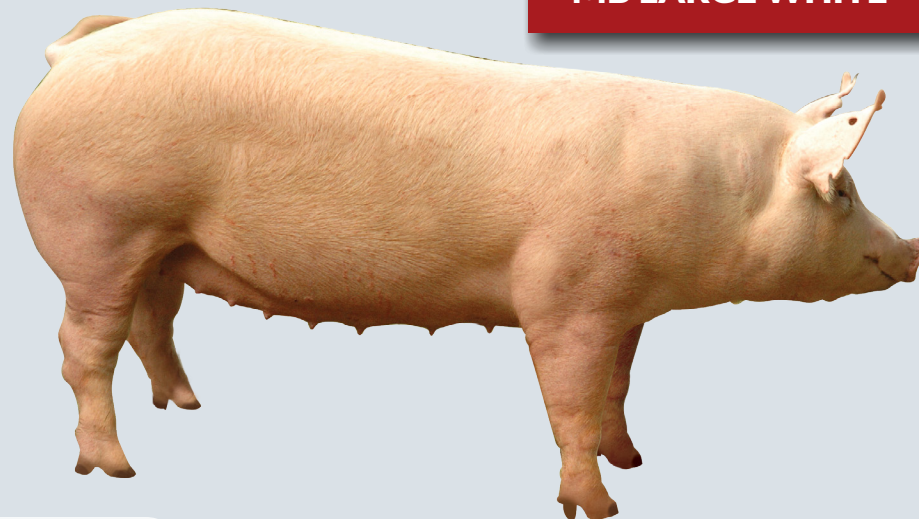
INPRO is a joint venture between INFARMCO and FEEDPRO providing the best in swine genetics.



## MB LANDRACE



## MB LARGE WHITE



## F1 GILTS



- High litter size
- Long productive life
- Excellent body conformation
- Shorter weaning to breeding interval
- Excellent mothering ability
- Strong and sturdy legs
- High health herd

## WEANERS or PIGLETS

